

MERO access floor / Floor coverings

Innovative solutions from one source

Development

Consulting

Planning

Manufacturing

Installation

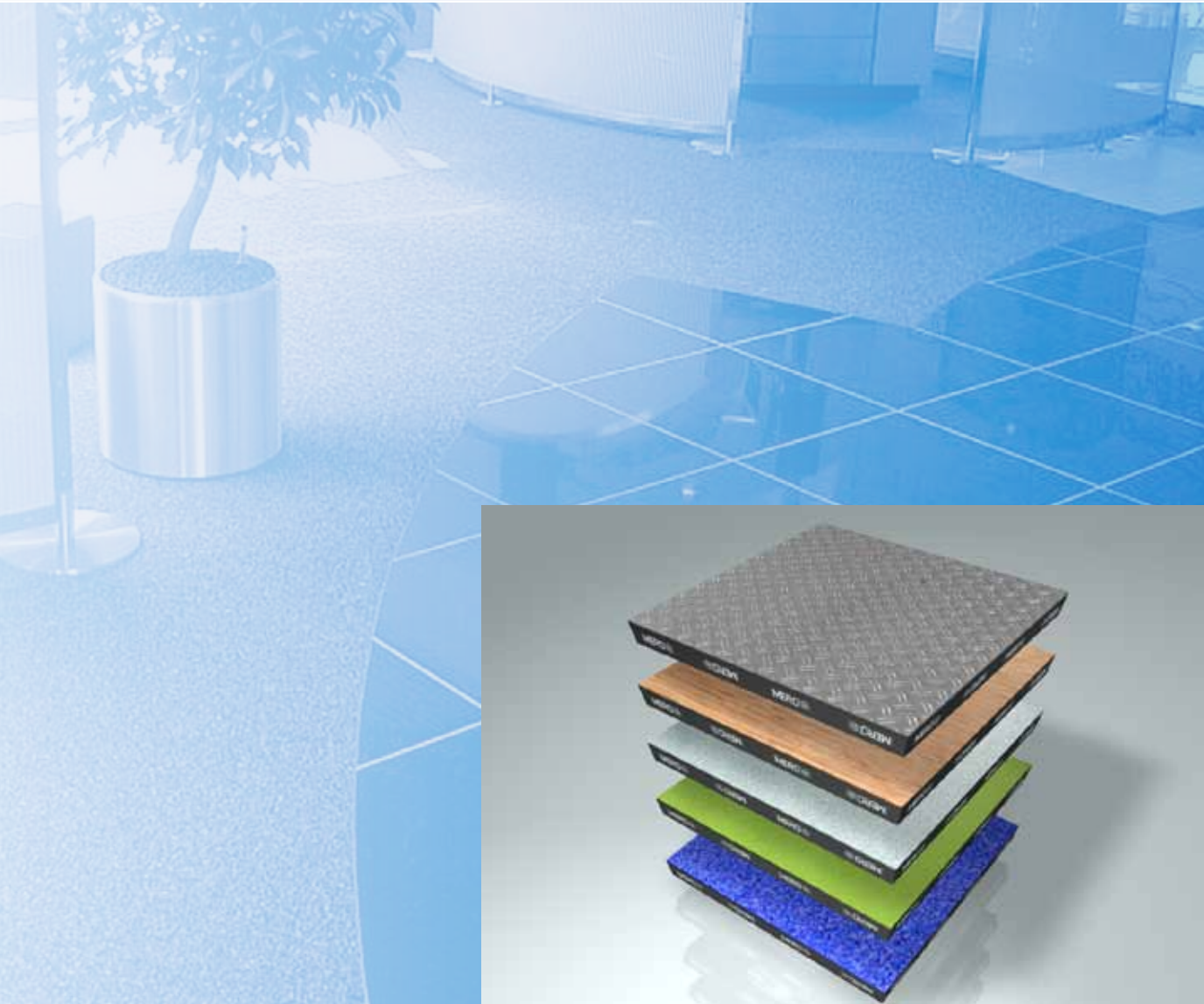
Access floor

Hollow floor

Floor covering and

Installation

Services



MERO  **TSK**
MERO-TSK International GmbH & Co. KG

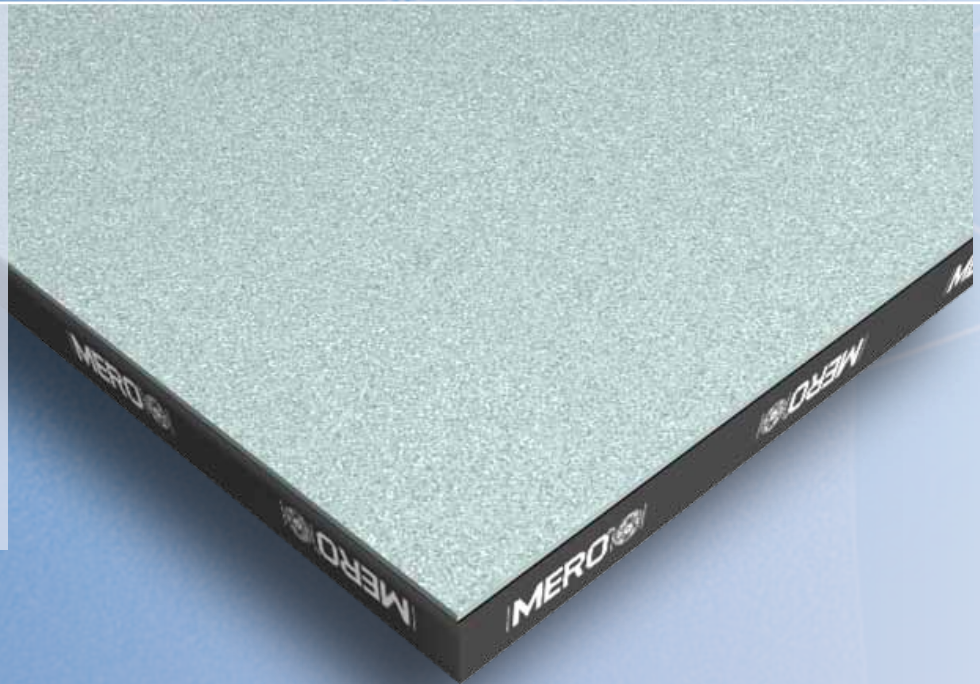
Floor systems

Elastic floor coverings: PVC - Linoleum - Caoutchouc

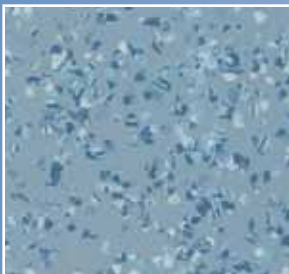
Elastic floor coverings can be used in various fields. They are easy to clean, wear-resistant, durable and available in a wide range of patterns and colours.

The elastic floor covering must be mechanically applied at factory to guarantee

- high flexibility and interchangeability of the floor panels
- maximum moisture proof and
- monolithic appearance of the floor area



Caoutchouc



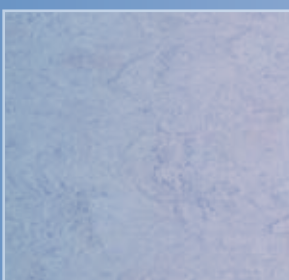
- extremely wear-resistant and long-lasting appearance retention
- dirt-repellent and easy to clean
- high fire protecting properties
- antistatic, optional conductive
- suitable for high load capacities

PVC



- cost-efficient but wear-resistant
- uncomplicated and easy to care
- wide range of patterns and colours e.g. wood and stone decor
- available e.g. conductive or PUR coated

Linoleum

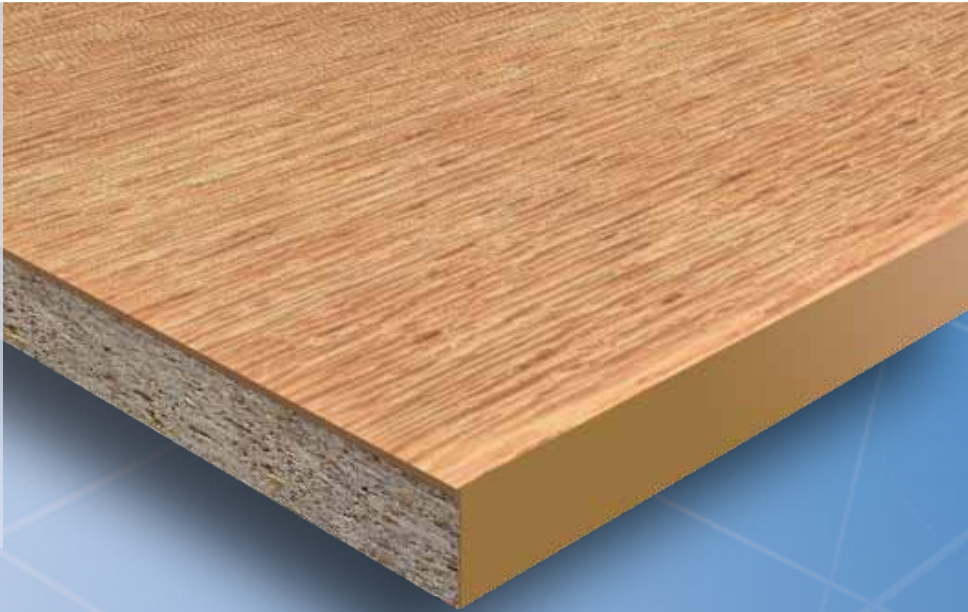


- environment-friendly floor covering of renewable resources
- long-lasting and wear-resistant
- hygienic and easy to care
- available e.g. conductive or PUR coated



Parquet

Wooden floors create a pleasant atmosphere. As we are using thin prefabricated wooden boards we deal carefully with natural resources. The surface of the boards is finished, however, can also be oiled or provided with solvent-free UV acrylic varnish. Optional, other types of wood or special designs of strip parquet can be produced and applied.



Ash - English style



Advantages of the MERO-TSK access floor parquet with edge protection

- better protection of parquet edges
- better moisture proof
- high dimensional accuracy for jointless appearance

Oak - Parallel style



Parquet for access floor panels is available as strip parquet in three standard designs, type nature, in following wood types:

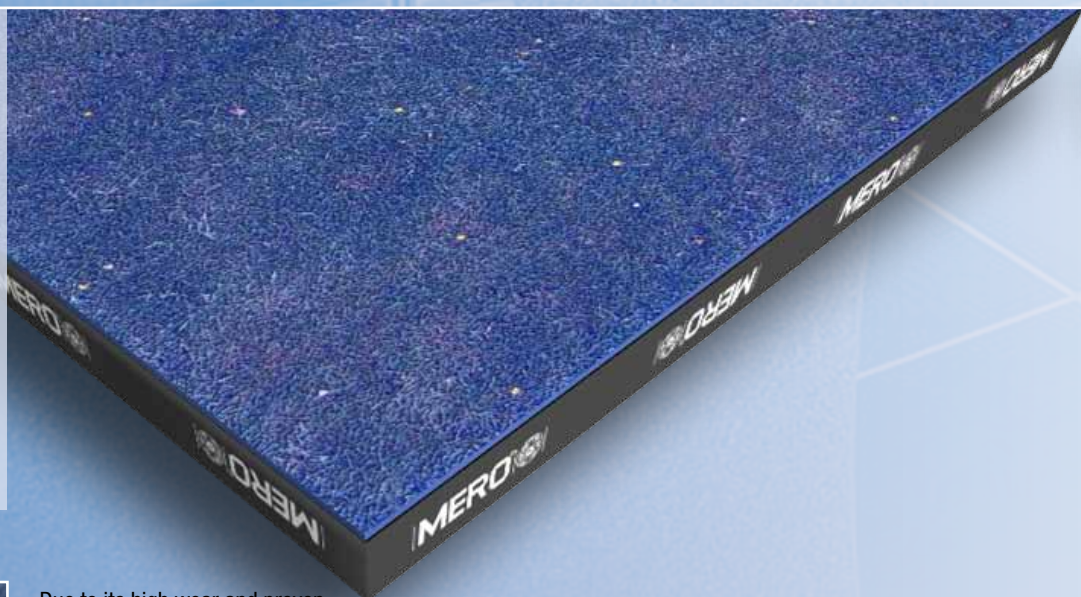
- Maple American or European type
- Beech damped or natur
- Oak
- Ash
- Birch
- Bamboo light or dark

Dark Bamboo



Textile floor coverings: Needle felt - Ball yarn - Tufting velour - Web Velour

Textile floor coverings are preferably be used in office areas or high traffic spaces like bank lobbies, public libraries or similar. Different types of carpets are available. Textile floor coverings are appreciated because of their high sound absorption properties. The floors in public areas should meet the requirements of the standard DIN EN 1307. On request, we can test the „breathing quality“ of the carpet in our own laboratory. The textile floor covering can be applied at factory or loosely laid as SL-tiles.



Needle felt

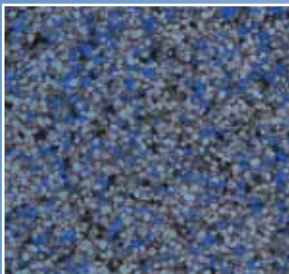


Due to its high wear and proven wheel resistance it is used for

- high traffic spaces
- stairs, underfloor heating
- office areas

Needle felt has medium sound absorption values and can be delivered as „breathing carpet“ on request.

Ball yarn



- cut-resistant, no frayed edges
- extremely hard-wearing
- easy-care due to stain-resistant and dense surface
- low waste
- good impact sound insulation

Tufted velour



- tufted velour for commercial areas
- for high and extreme wear
- available in many patterns and colours, different thickness and various surfaces
- good to excellent impact sound insulation

Web Velour

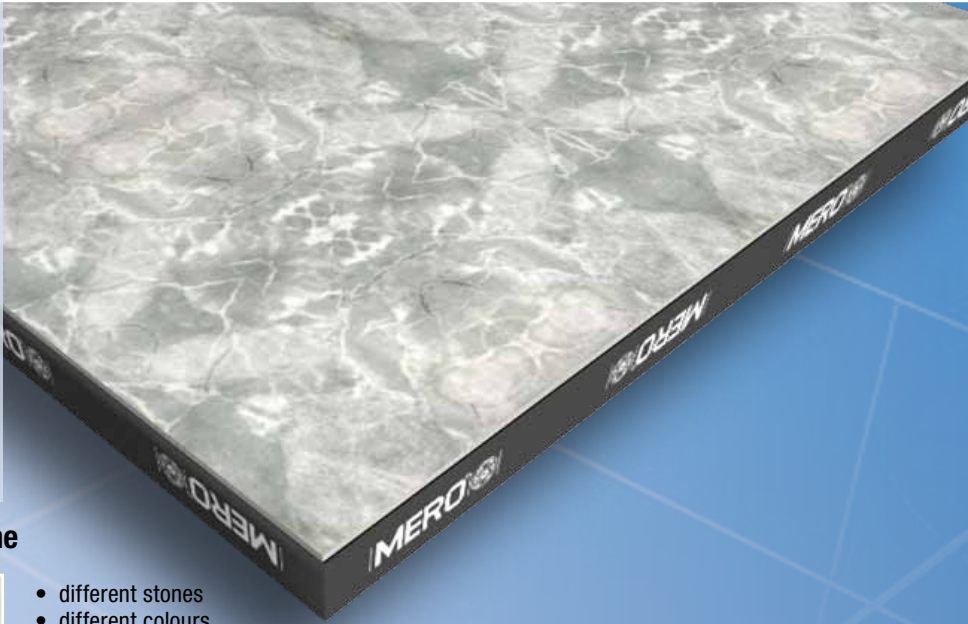


- woven carpets for extreme wear
- available in many patterns and colours
- good to excellent impact sound insulation
- available as „breathing carpet“ on request



Natural and artificial stone

Stone coverings are installed in spaces where high-grade and stylish ambience is required. Typical fields of application are department stores, bank lobbies, hotels or public buildings as well as showrooms. Beside the creative and architectural requirements the area's degree of utilization should be considered too.



Natural stone Travertine

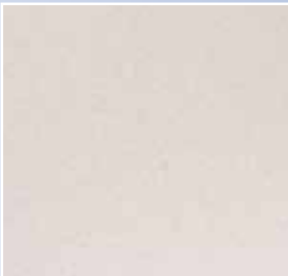


- different stones
- different colours
- polished, matt, brushed or lasered surfaces
- granite which is extremely hard, durable and easy to clean is used in high-traffic spaces. Granite is widely acid-resistant.
- limy stones as marble, travertine or shell limestone with softer surfaces

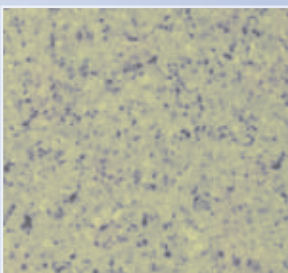
Natural stone marble



Natural stone granite



Artificial stone

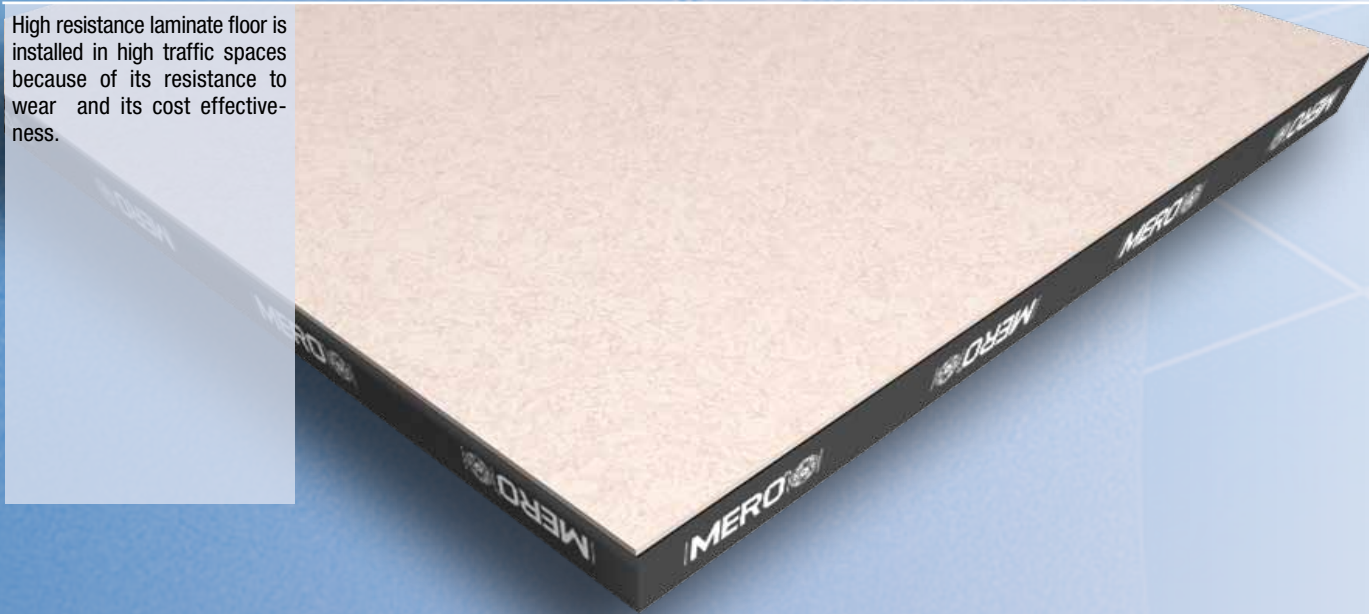


- brilliant colours
- various fields of application
- continuously repeatable process
- easy-care



Laminate

High resistance laminate floor is installed in high traffic spaces because of its resistance to wear and its cost effectiveness.



Marbled pattern



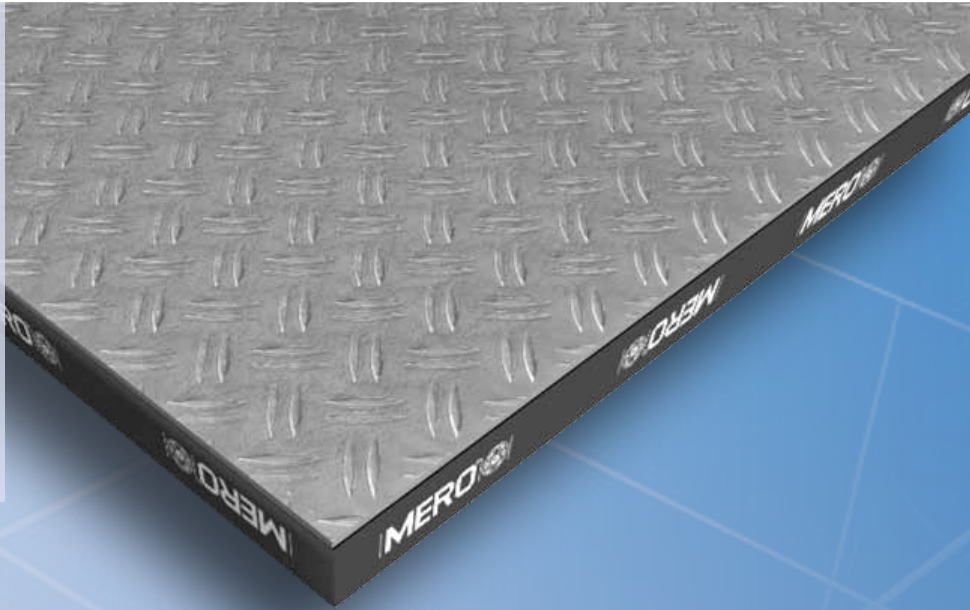
Available on request

- various wood decor
- various stone decor
- coloured, metallic or structural surface design



Special coverings: stainless steel - cork - bulb plate

On request, MERO-TSK can provide many special types of floor coverings and is able to test their suitability for the intended use. Appreciated special coverings are e.g. glass, cork, stainless steel or bulb plates.



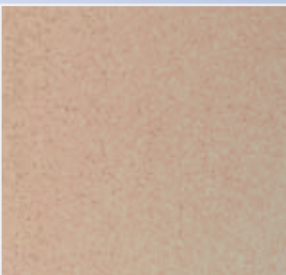
Stainless steel



Suitable for spaces with specific requirements to

- optics
- chemical and physical strain

Cork



- good atmospheric environment properties
- natural appearance
- pleasant to walk on
- good impact sound insulation

Bulb plates



- skid resistance in production and storage areas
- high mechanical strain resistance



Which floor covering goes with which floor type ?

MERO-TSK is testing floor coverings in their own laboratories regarding suitability: which covering goes with which panel and which adhesive meets the requirements regarding peel resistance, paging, electrostatical conductivity etc.

	Type 3	Type 5	Type 6	Type 7
	Steel	Wood	Calcium sulfate	Aluminium
 Elastic	Yes	Yes	Yes	Yes
 Textile	Yes	Yes	Yes	Yes
 Stone		Yes	Yes	
 Parquet		Yes	Yes	
 Laminate	Yes	Yes	Yes	Yes
 Bulb plates	Yes	Yes	Yes	Yes



TÜV-certified since 1997



Head office:
MERO-TSK
International GmbH & Co. KG
 Max-Mengeringhausen-Str. 5
 97084 Würzburg, Germany



Postal address:
MERO-TSK
International GmbH & Co. KG
 Product Division Floor Systems
 Lauber Straße 11
 97357 Prichsenstadt, Germany
 Phone.: +49 (0) 93 83 203-603
 Fax: +49 (0) 93 83 203-629
 E-mail: bodensysteme@mero.de
 Internet: www.mero.de